

# SMOOTHFILLER COLOR SERVICES – SAME DAY, NO RESTRICTIONS!

## COVER GREY

Applied prior to Smoothfiller service to <1cm regrowth only:

- Koleston Perfect
- Koleston Xpress
- Illumina Color



## GLOSSING

Gloss can be applied immediately following Smoothfiller:

- Color Touch
- Color Fresh Create
- Color Fresh Mask
- Shinefinity<sup>1</sup>



## GREY & GLOSS

Grey coverage prior to Smoothfiller and glossing immediately after.



## LIGHTEN & GLOSS

Highlight or balayage prior to Smoothfiller service. Finish the service with a glossing.

- BlondorPlex<sup>2</sup>
- Blondor Multi Blonde
- Blondor Freelights
- Blondor Extra Cool



## THE WORKS

Cover grey and highlight prior to Smoothfiller. Complete the look with a gloss immediately following Smoothfiller.



<sup>1</sup>Shinefinity and BlondorPlex Cream Toners are not recommended right after Smoothfiller. They are safe to use; however the tone will not be as rich/ not true-to-tone as expected. <sup>2</sup>When using BlondorPlex, do not use WellaPlex No. 2. Up to 97% less breakage results are not guaranteed.

# ROOT TOUCH UP UP TO 1 CM

## ONLY 1CM ROOTS?

In this case you may color the roots before Smoothfiller service; Smoothfiller service does not reach the hair roots.



Apply Smoothfiller after permanent color has processed and the hair has been cleansed.



# SMOOTHFILLER & GREY COVERAGE

Cover grey roots up to 1cm at the same appointment as Smoothfiller service.

Apply Koleston Perfect, Koleston Xpress, or Illumina Color to the grey root area only. Process, shampoo and continue with your Smoothfiller service.



Permanent color after Smoothfiller is not recommended as it might reduce the lastingness of Smoothfiller as they both work in cortex level.

## COVER GREY



Root retouch



Shampoo

---

## SMOOTHFILLER



Blow-dry 80%



Smoothfiller 20 mins



Rinse



Blow Dry 100%



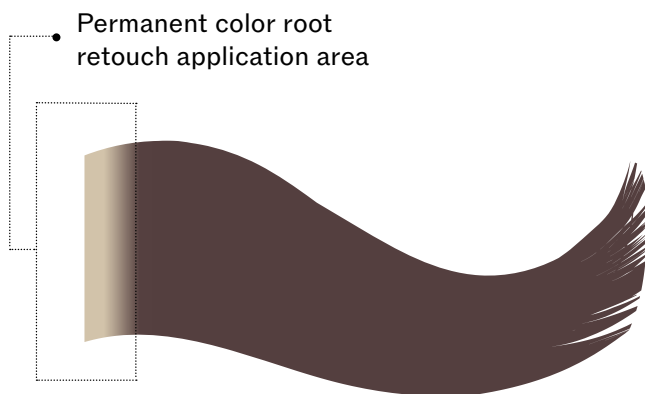
Thermal activation

# GREY ROOT RETOUCH GUIDELINES



## 1 PERMANENT COLOR ROOT RETOUCH

When doing the root retouch, with a permanent color, apply only to the root area (less than 1 cm).



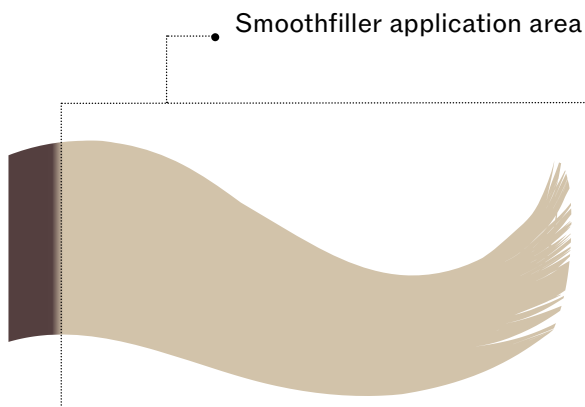
## 2 PROCESS AND CLEANSE

Process permanent root retouch as you normally would and shampoo.



## 3 SMOOTHFILLER APPLICATION AREA

After shampooing and 80% blow-dry, do not overlap Smoothfiller and flat iron over fresh permanent color root retouch.



# PERMANENT COLOR ON MID-LENGTHS AND ENDS

When applying permanent color to the mid-lengths and ends, it is recommended to wait for 2 weeks (5 washes) after Smoothfiller service.



## SMOOTHFILLER



Shampoo



Blow dry



Smoothfiller application & development



Rinse



Blow dry 100%



Thermal activation & finish

---

## WAIT MINIMUM OF 5 WASHES

---

## COLOR



Color as normal

Permanent color after Smoothfiller might reduce the lastingness of Smoothfiller as they both work in cortex level.

# PH CONTROL BEFORE GLOSSING

If hair is glossed immediately after Smoothfiller service, a pH control step is necessary.

**PH CONTROL:** Since Smoothfiller is acidic, the hair pH needs to be rebalanced for the alkaline color to be effective.

**HOW:** After the Smoothfiller service, gently lather shampoo and let it sit for 10 min before rinsing and following with glossing.

## PH SCALE

Acidic ← → Alkaline



Smoothfiller  
2 – 2.5



Shampoo  
5 – 5.5



Color Touch  
9.5 – 10.5



# SMOOTHFILLER & SAME-DAY GLOSSING\*

Hair can be glossed after completing a Smoothfiller service. pH balancing step is required prior to glossing.

Color result after Smoothfiller may be less intense than usual.



## SMOOTHFILLER



Shampoo



Blow dry 80%



Smoothfiller application & development



Rinse



Blow dry 100%



Thermal activation

## PH CONTROL



Shampoo 10 min

**10**

## COLOR REFRESH



Glossing

## FINISH



Post treat

\* Shinefinity and BlondorPlex Cream Toners are not recommended right after Smoothfiller. They are safe to use; however, the tone will not be as rich/not true-to-tone as expected. Since Smoothfiller fills porosity in the cortex, Color Touch results after Smoothfiller may be less intense than usual.

# SMOOTHFILLER & LIGHTENER\*

Highlights are recommended to be done before the Smoothfiller service.



HIGHLIGHTS



Highlights

SMOOTHFILLER



Emulsify & shampoo



Blow dry



Smoothfiller application & development



Rinse



Blow dry 100%



Thermal activation

PH CONTROL



Shampoo 10 min

10

COLOR REFRESH



Glossing

FINISH



Post treat

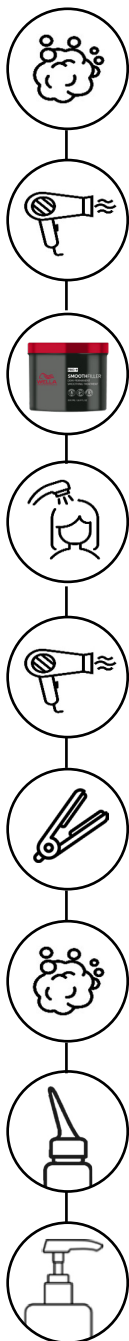
\*When using BlondorPlex, do not use WellaPlex No. 2. Up to 97% less breakage results are not guaranteed.

# SMOOTHFILLER COLOR SERVICES SUMMARY\*

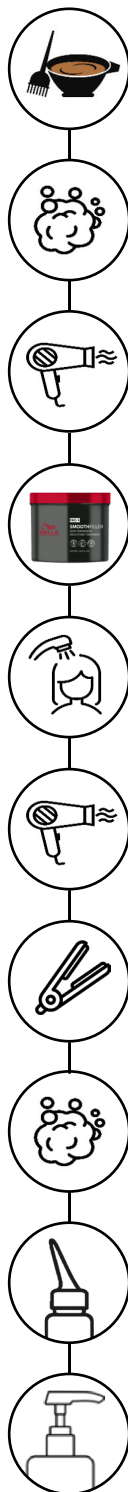
## COVER GREY



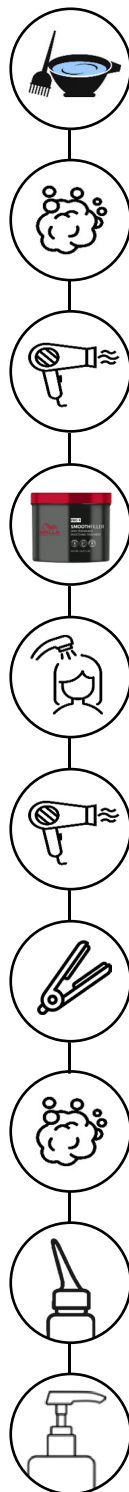
## GLOSSING



## GREY & GLOSS



## LIGHTEN & GLOSS



## THE WORKS



\*Shinefinity and BlondorPlex Cream Toners are not recommended right after Smoothfiller. They are safe to use; however the tone will not be as rich/not true-to-tone as expected. Since Smoothfiller fills porosity in the cortex, Color Touch results after Smoothfiller may be less intense than usual. When using BlondorPlex, do not use WellaPlex No. 2. Up to 97% less breakage results are not guaranteed.